

OUR PROMOTION - YOUR GIFT FOR EVERY alphonics TV!

# alphatronics

## SLA-Line DWS

powered by  
webOS Hub

Unique and Powerful!  
**The optimized SLA line**  
- sound you absolutely  
must experience!

### The Innovation for Mobile Entertainment:

- ▶ **Unique sound** with a forward-projecting soundbar
- ▶ **Powerful speakers** (2x 7.5 W RMS)
- ▶ **More volume, better sound** thanks to enhanced acoustic chambers
- ▶ **Optimal audio tuning** with integrated sound profiles
- ▶ **Replaces external soundbars** - premium sound directly from the TV
- ▶ **Elegant frameless design** with a high-quality aluminum front
- ▶ **Brilliant display** - top quality, zero-pixel-defect class
- ▶ **Latest webOS Hub generation** for smart entertainment
- ▶ **Seamless integration with AirPlay 2** for maximum flexibility
- ▶ PVR recording functionality and Timeshift
- ▶ alphonics technology package
- ▶ 3-year manufacturer warranty

Choose between a wall mount or a soundbar!

# FREE GIFT

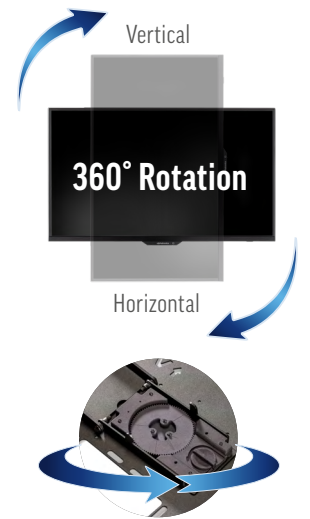
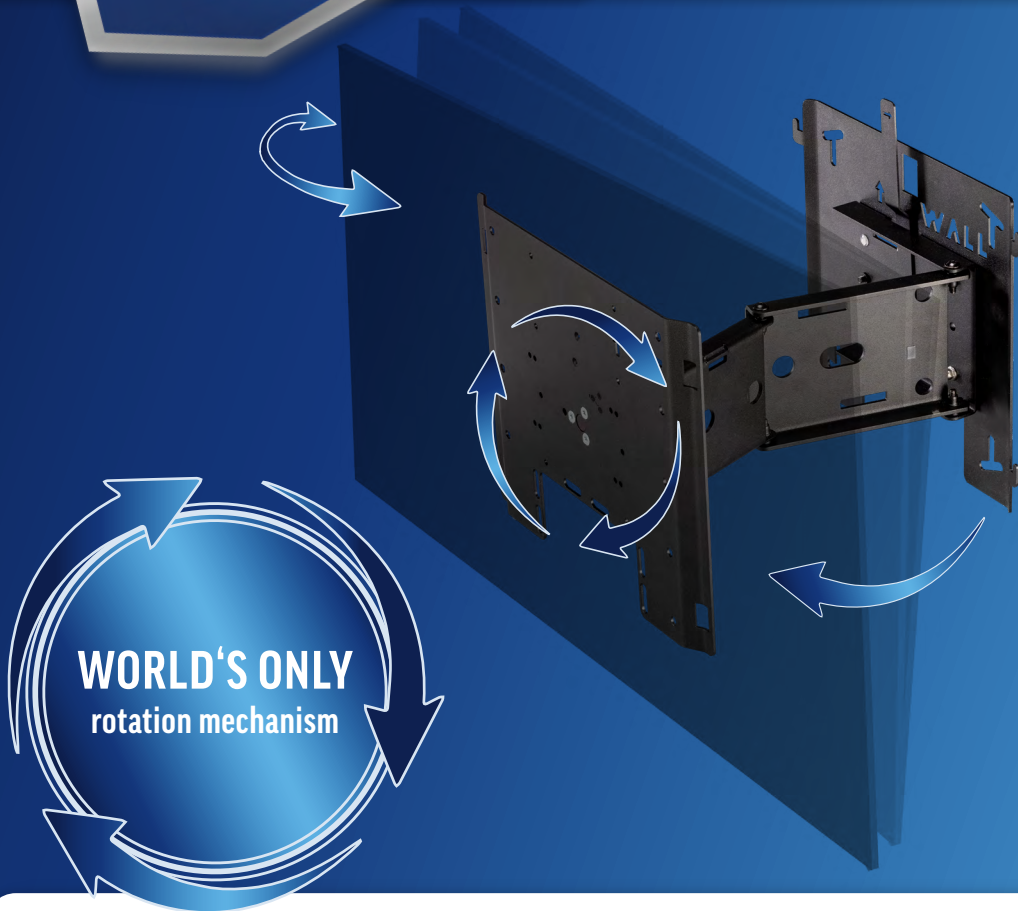
with every TV set



Promotional period: April 1st to July 31st, 2025\*

**NEWLY  
PATENTED  
MECHANICS**

# Slim Mount TV Brackets



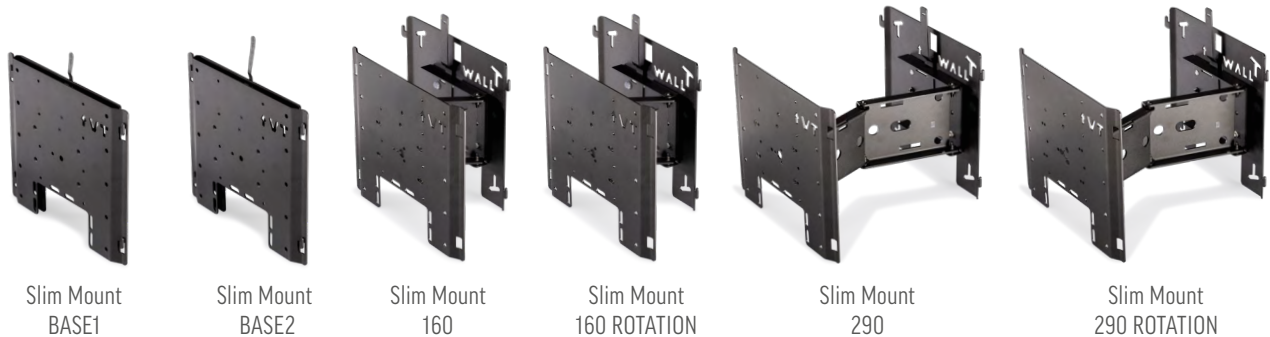
**Always perfectly aligned**

The **unique gear-ring structure** allows precise angle adjustment of your screen. Available for the models **Slim Mount 160 and 290 ROTATION**.

## alphatronics Slim Mount – Flexible, secure & innovative!

The Slim Mount TV brackets offer maximum flexibility and safety with a patented rotation mechanism and extension feature – perfect for mobile use.

- ▶ **Ultra-slim design** – only 15 mm wall distance
- ▶ **Precise alignment** thanks to rotation mechanism
- ▶ **VESA-compatible** (100x100, 200x100) for 19–40 inch TVs
- ▶ **Durable materials** like stainless steel & carbon fiber-reinforced plastic
- ▶ **Made in Germany** – Quality & innovation for on-the-go!



	Wall distance	Maximum screen size	Maximum load capacity	Mobility
<b>Slim Mount BASE1</b>	15 mm	19-27 inch	20 kg	None
<b>Slim Mount BASE2</b>	15 mm	27-40 inch	20 kg	None
<b>Slim Mount 160</b>	30 mm - 160 mm	19-40 inch	12 kg	Extendable (2 joints)
<b>Slim Mount 160 ROTATION</b>	35 mm - 160 mm	19-40 inch	12 kg	Extendable (2 joints) + 360° rotation
<b>Slim Mount 290</b>	30 mm - 285 mm	19-40 inch	12 kg	Extendable (3 joints)
<b>Slim Mount 290 ROTATION</b>	35 mm - 285 mm	19-40 inch	12 kg	Extendable (3 joints) + 360° rotation

**NEW**



**Bluetooth®**

## alphatronics **ClearSound 400 + ClearSound 700**

**Powerful sound, maximum flexibility!** The ClearSound line impresses with excellent sound quality and versatile connections such as HDMI™ (ARC), Toslink/SPDIF, USB, and Bluetooth 5.0. Perfect for home cinema and on-the-go – experience sound in a whole new dimension!

- ▶ **ClearSound 400:** Two 2.25" full-range speakers for crystal-clear highs and powerful bass
- ▶ **ClearSound 700:** Adds two 1.2" tweeters for even more brilliant sound
- ▶ **30W / 40W RMS power, 12V connection, digital sound profiles** (Movie, Music, Dialogue)
- ▶ **Elegant design with metal grille, flexible mounting options, and easily accessible connections**



STREAM	STREAM 2	STREAM 5G PRO
☆☆☆	☆☆☆	★★★★
Download speed of <b>up to 150 MBit/s</b>	Download speed of <b>up to 300 MBit/s</b>	Download speed off <b>&gt; 3000 MBit/s</b>
<b>Standard user</b> Up to 3 devices simultaneously	<b>Mobile Office or family</b> Up to 5 devices simultaneously	<b>Pro User</b> Maximum speed

## The alphatronics STREAM Family Our internet solution for on-the-go!

The STREAM family offers the perfect internet solution for motorhomes & trucks. Use your Smart TV, laptop, tablet, or smartphone flexibly and reliably – no matter where you are!

- ▶ **Versatile installation** – for indoor & outdoor use
- ▶ **Complete set** with all components included
- ▶ **The perfect companion** for alphatronics Smart TVs
- ▶ **Easy installation & intuitive web interface**
- ▶ **Dual SIM slots & Auto APN function**
- ▶ **Automotive-certified** – durable & secure

**NEW!**  
Maximum speed  
thanks to **5G!**

Find out  
more online!



## SL-Line DW & K-Line W



K-Line



SL-Line

### TVs designed for mobile use!

In 2024, alphatronics introduces the **SL-Line**, the next generation of mobile smart TVs. Available in **22, 24, 27, 32, and 40 inches**, these TVs integrate effortlessly into motor-homes, caravans, and panel vans. Their **frameless housing, combined with a dimmable & deactivatable front logo** (except 40"), **creates a modern, functional, timeless & innovative design.**

For those seeking an affordable entry into smart technology, the **K-Line** offers proven quality with focus on essentials. No DVD player, but well-thought-out features ensure reliable entertainment – **perfect for on-the-go!**

### The highlights at a glance:

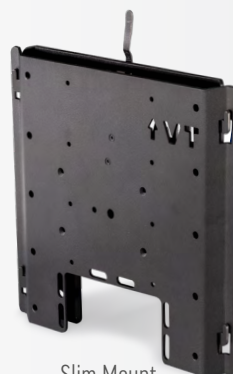
- ▶ **webOS Hub** of the latest generation
- ▶ **AirPlay 2** – seamless connectivity with Apple devices
- ▶ **PVR recording & Timeshift** for flexible TV usage
- ▶ **Wave-inspired design** with illuminated, dimmable front logo (SL-Line)
- ▶ **High-quality panels** (Pixel Fault Class 0, matte finish)
- ▶ **alphatronics technology package:** reverse polarity protection, overvoltage protection, corrosion-protected electronics, climate tested
- ▶ **Integrated DVD player** (SL-Line only)
- ▶ **3-year manufacturer warranty**

## FREE GIFT with every TV set!

Our gift for the new season: **When you purchase an alphatronics TV with webOS Hub**, you will receive either the **alphatronics Slim Mount TV bracket BASE** or the **Soundbar alphatronics ClearSound 400** for free.

\* **Redemption process:** After purchasing your new alphatronics television (models SLA-xx DWS, SLA-32 W4K, SL-xx DW, SL-xx W, K-xx W), send us a copy of your receipt along with the completed form (available for download on our website: [www.alphatronics.de](http://www.alphatronics.de)). Please include the serial number of the device, which can be found on the back of the unit. Submit this information via mail or email (address provided below). You will then receive, depending on your choice, either the alphatronics Slim Mount BASE bracket or the alphatronics Soundbar ClearSound 400 free of charge.

This promotional offer is valid for end customers only. The purchase must be made between April 1, 2025, and July 31, 2025 (as per receipt). Please note that legal recourse is excluded

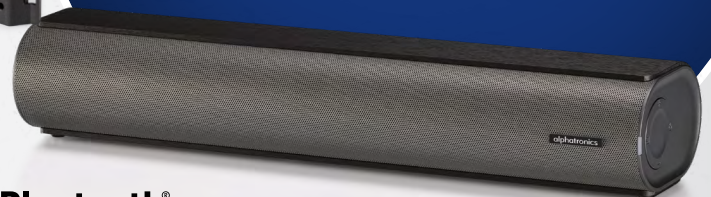


Slim Mount  
BASE

Choose between a wall mount or a soundbar!

# FREE GIFT

with every TV set \*



ClearSound 400

